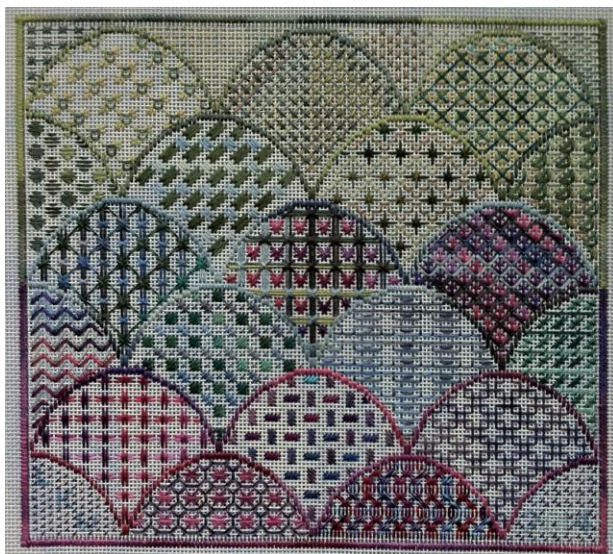


Sashiko Sampler

an original Needlepoint project from Blue Dogwood Designs



December 2014



December!

New people can go back to January and start from the beginning and download all 12 stitchguides.

If you would like the canvas marked and ready to go, order for \$31 plus shipping

<http://www.bluedogwooddesigns.com/newdesigns.php>

I am using Zweigart Vintage Blue 18 count canvas, which has a washed overdyed look. Some of the canvas will show as the design continues.

Finished size is 8.25 in x 7.5 in on 18 count.

Fibers are from Valdani - they have 6 ply silk and 3 ply cotton, sold in small balls. Peacock Alley Needlepoint in Ada, Michigan, will have the threads or check your local needlepoint store.

Have fun with this stitchguide or modify on your own.

The last month is here! Thank you to Linda W for the fabulous stitching. Geometric patterns can be used as great backgrounds or stitches to fill in areas. Using the Valdani threads have added to the color-change. Imagine all these patterns stitched as whitework!

Order the Vintage Blue Zweigart canvas with the diagram marked in the ditch and ready to go on the website here: <http://www.bluedogwooddesigns.com/newdesigns.php> for \$31 plus shipping/handling.

If you are just starting, begin with the January 2014 Stitchguide.

Here is the order of the shells.



Step by step

Threads needed:

Shell 13

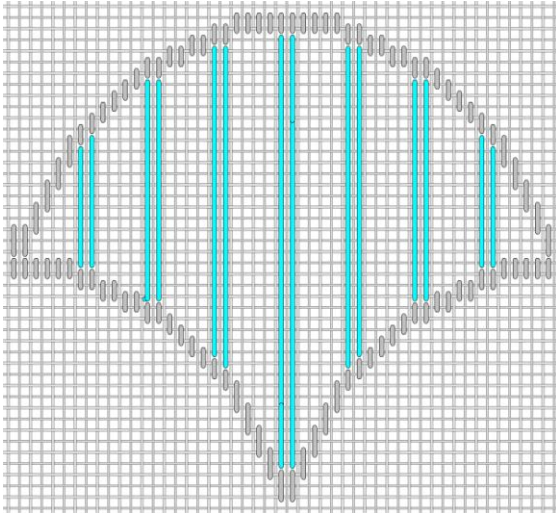
O537 6 ply silk

O526 6ply silk

V16 6 ply silk

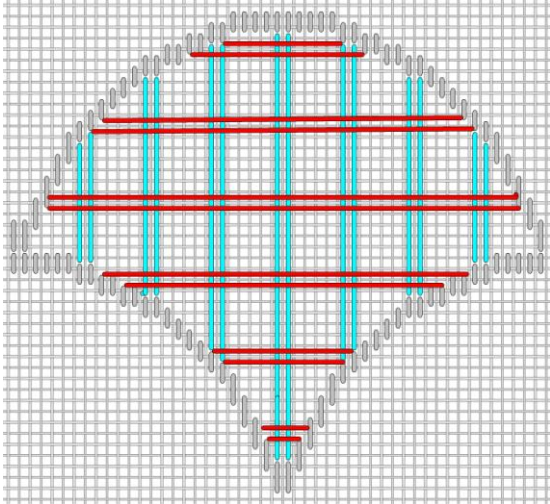
These are the threads we started with, now the final shell!

Shell #13

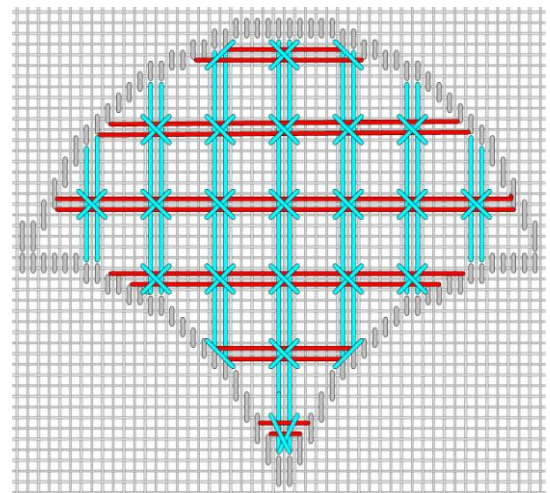


Blue on diagram: O537 6 ply silk - use 3 ply.

Center these long stitches as shown in the shell - all other steps that follow will depend on this and spacing.



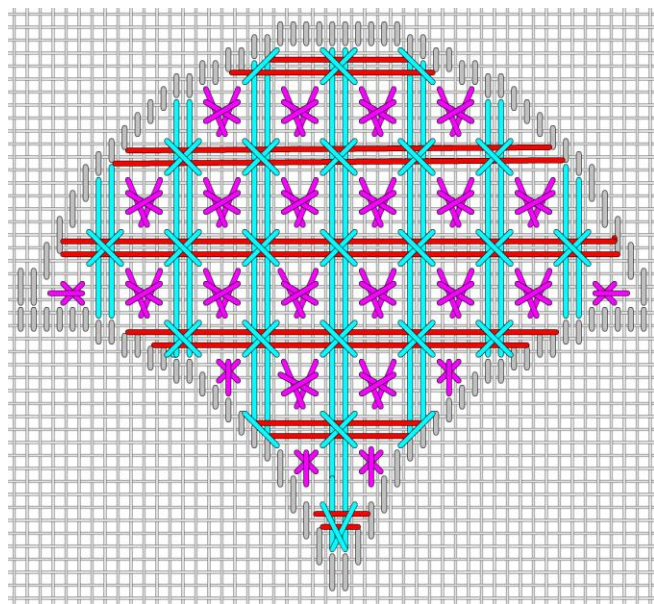
Red on O526 6 ply silk - use 3 ply



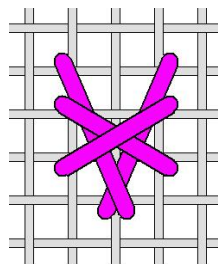
Light blue cross stitch is O537 6 ply silk - use 3 ply.

Two on the top row and two second row from the bottom are just half of the X - front slash or back slash as shown in diagram.

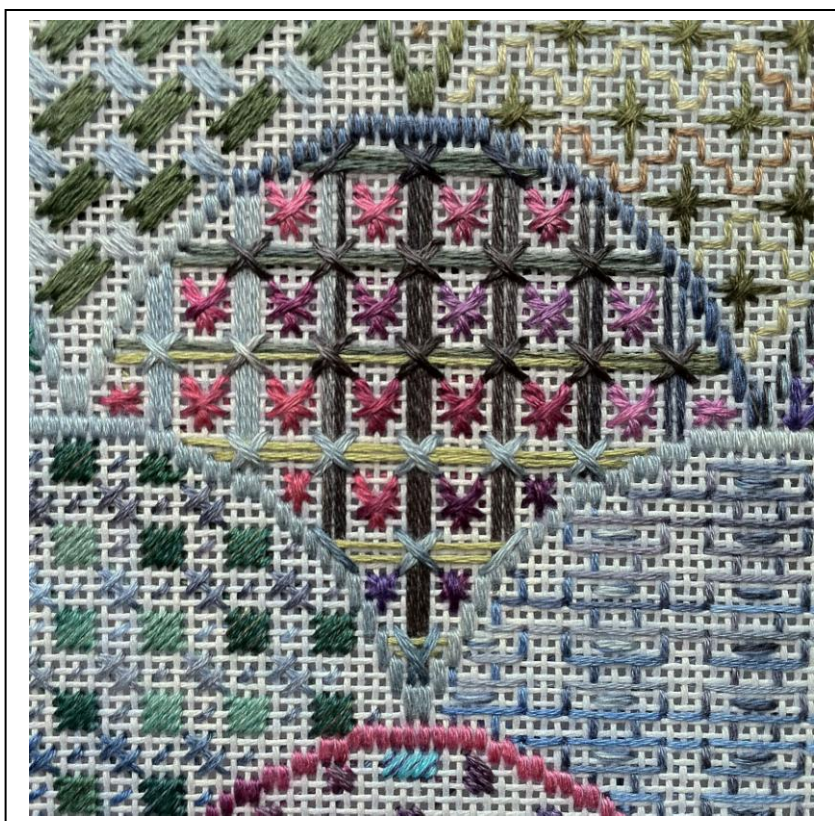
The bottom cross is oblong.

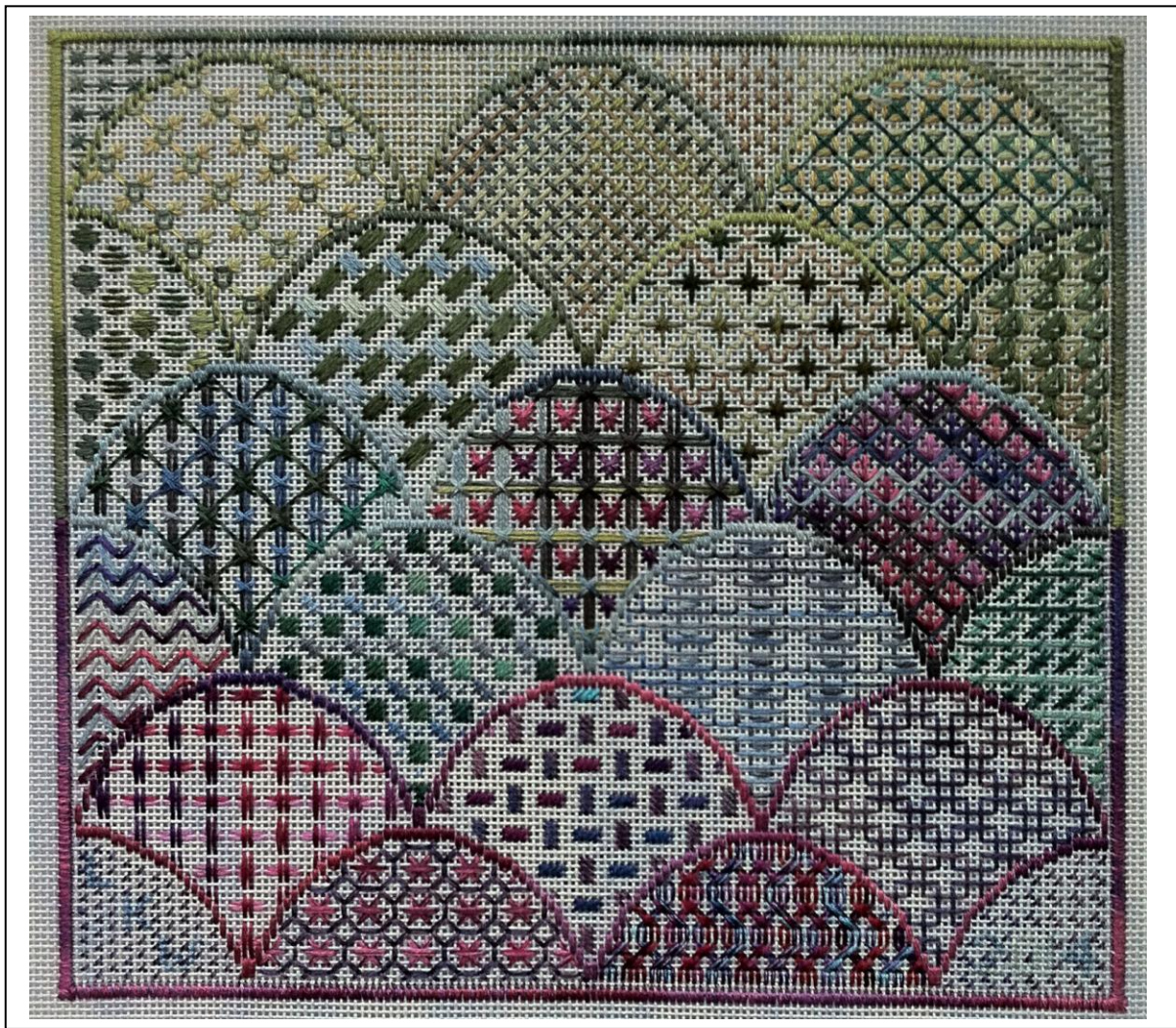


Purple stitch looks like a small heart. Here is upclose view. Use V16 6 ply silk with 3 ply.



See the 6 odd ones that are changed to fit.





Thanks for stitching along! Stay tuned for 2015 project called "Crystallize". Planet Earth 6 ply silk and Swarovski crystals... just imagine...

Best, My best friends are stitchers,

Kay @ Blue Dogwood Designs

Questions? Email me at Email@BlueDogwoodDesigns.com