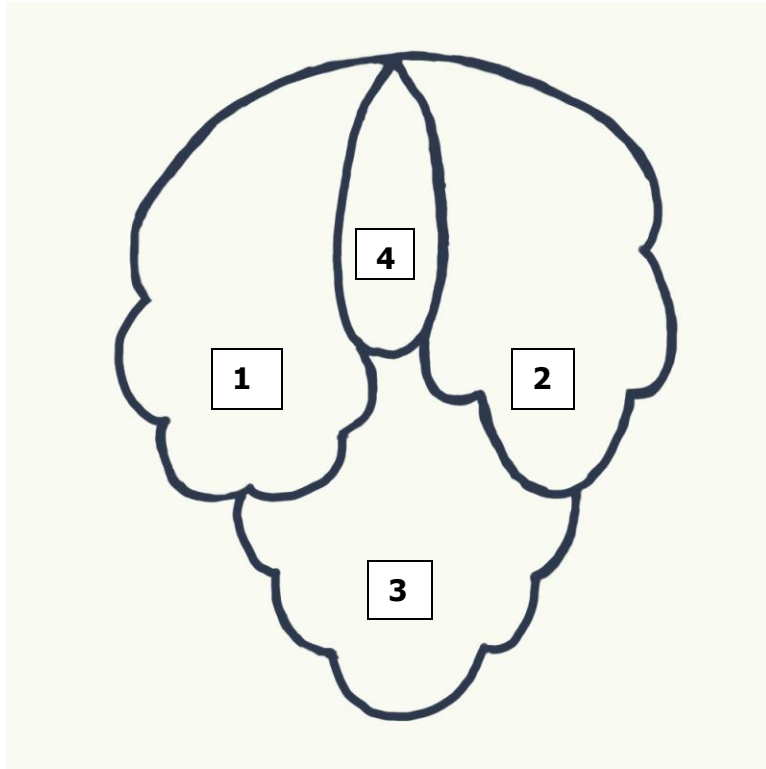


Blue Dogwood Designs May 2010

Leaf Template and Stitch of the Month

Print out this page for your template and stitchguide



Trace the leaf design onto 18 count canvas.

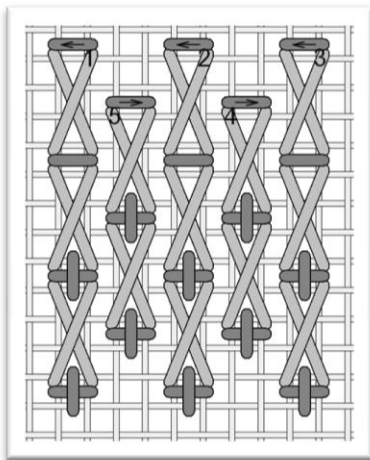
If you missed previous templates, go to www.BlueDogwoodDesigns.com Contents Box on Home Page choose "Stitch Guides" and download the month you are missing.

At the end of the year you will have 12 leaf ornaments to create your own tree or wreath.

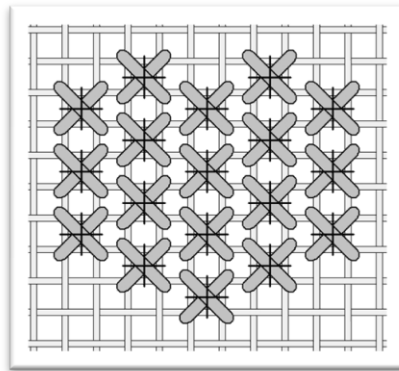
Thank you. Keep needlepoint in your life. A stitch a day keeps the blues away...

Kay, Blue Dogwood Designs

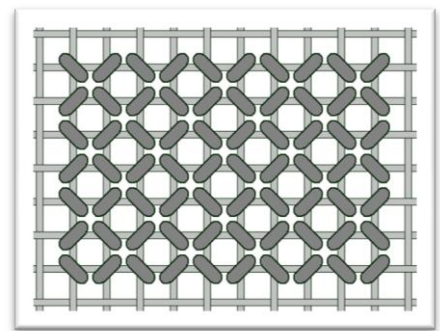
Needlepoint for your home, your life, your zen



1 and 2



3



4

Area 1 and 2: work the oblong cross first and ply up or use heavier weight thread of medium color. Then work the backstitch fill-in following the numbers in the direction of the arrow with a darker thread or your metallic.

Area 3 should be in a lighter color with a thinner thread/metallic for the top cross.

Area 4 is your darkest color in alternating tent.